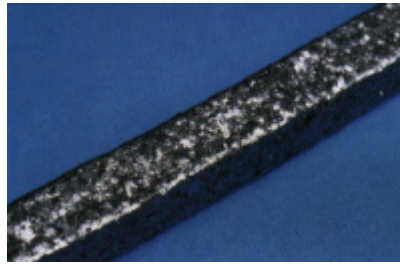


Braided Packing

Rains-Flo has a full line of braided packing to choose from. Here are a few types of braided packing to select from. If you are looking for other types of packing or have any questions please call Scott Harris at 1-800-231-4209.

GRAPHITE Braided Packing RF-200 **\$ 19.90 per lb.**

Rains-Flo's RF-200 (Black-Gold) is made from an acrylic yarn, coated with a light mineral oil. Graphite is heavily applied to individual fibers as well as to the completed braided stock. Color – Black



pH: 4 - 10		Temp. : 450		feet/min: 1885							
Size:	1/4"	5/16"	3/8"	7/16"	1/2"	9/16"	5/8"	11/16"	3/4"	7/8"	1"
Ft. per lb	31	18.9	14	10.5	8	6.5	5	4	3.6	3	2

PTFE - Braided Packing RF-272 **\$ 29.90 per lb.**

Rains-Flo's RF-272 (Lyte-Braid) is made from PTFE impregnated acrylic yarn, coated with a light mineral oil. PTFE is applied to individual fibers as well as to the completed braided stock. Color - White.



pH: 3 - 11		Temp.: 500		feet/min: 1885							
Size:	1/4"	5/16"	3/8"	7/16"	1/2"	9/16"	5/8"	11/16"	3/4"	7/8"	1"
Ft. per lb.:	24	16	11	7.6	6.3	4.9	4.7	3.3	3.1	2	1.5

FOOD-GRADE (FDA) Braided Packing RF-355 \$ 54.90 per lb.

Rains-Flo's RF-355 (Food-Grade) is a pure PTFE filament yarn that is pre-coated with a lubricant that complies with FDA. Color - White.



pH: 0 – 14	Temp.: 500			feet/min: 1202							
Size:	1/4"	5/16"	3/8"	7/16"	1/2"	9/16"	5/8"	11/16"	3/4"	7/8"	1"
Ft. per lb.:	19.4	12.5	9	7	5.1	4.1	3.3	2.7	2.3	1.7	1.2

GFO (GORE FIBER) Braided Packing RF-600 \$ 74.90 per lb.

Rains-Flo's RF-600 (Soft-Braid) GFO is made of expanded PTFE fibers containing both suspended and encapsulated fine graphite particles. These unique fibers are lubricated with inert break-in oil as they are braided. Color - Black.



pH: 0 - 14	Temp.: 550			feet/min: 4400							
Size:	1/4"	5/16"	3/8"	7/16"	1/2"	9/16"	5/8"	11/16"	3/4"	7/8"	1"
Ft. per lb.:	19.4	13.1	9	7.6	5.8	4.6	3.7	3.1	2.6	1.9	1.5

Polyimide, PTFE Braided Packing RF-700 \$ 74.90 per lb.

Rains-Flo's RF-700 (Tuff-Braid) is made up of orange, blue polyimide fibers & white PTFE that are coated with inert lubricants and a PTFE blocking susperoid. Color – Orange, Blue & White.



pH: 0 - 12	Temp.: 550			feet/min: 2500							
Size:	1/4"	5/16"	3/8"	7/16"	1/2"	9/16"	5/8"	11/16"	3/4"	7/8"	1"

Ft. per lb.:	22	15	11	8	6.1	5.0	4	3	2.7	2.1	1.7
--------------	----	----	----	---	-----	-----	---	---	-----	-----	-----

Rains-Flo Sealing Systems, Inc. 820 S. Lipan St., Denver, Colorado 80223 (800) 231-4209 Fax (303) 935-9383

CARBON YARN Braided Packing RF-900 \$ 124.90 per lb.

Rains-Flo's RF-900 (Hot-Braid) is constructed of carbon filament yarn completely coated with PTFE. Color - Black with milky white coating.



pH: 0 - 14	Temp.: 600		feet/min: 3000								
Size:	1/4"	5/16"	3/8"	7/16"	1/2"	9/16"	5/8"	11/16"	3/4"	7/8"	1"
Ft. per lb.:	22.1	14.9	10.9	7.8	6.2	4.8	3.9	3.3	2.9	2.2	1.7

CARBON GRAPHITE Braided Packing RF-910 \$ 244.90 per lb.

Rains-Flo's RF-910 (Carbon-Graphite) is a unique combination of carbon yarns treated throughout with fine particles of graphite. Color - Black.



pH: 0 - 14	Temp.: 650		feet/min: 1200								
Size:	1/4"	5/16"	3/8"	7/16"	1/2"	9/16"	5/8"	11/16"	3/4"	7/8"	1"
Ft. per lb.:	35.2	27	17.5	15	10.2	8.2	6.6	5.5	4.8	3.6	2.8

HOLLOW CORE PACKING

RainsFlo's Hollow Core packings are specifically designed to seal large rotating equipment like mixers and agitators. Testing has proven that a high quality braided packing with a rubber core will outlast conventional packing in applications associated with excessive shaft deflection on large shafts. We guarantee it!

Sizes Available: 1/2" and up.



Core Material: Silicone; standard (others upon request).
Hollow Core: for rotating equipment, designated "HC" on order.
Solid Core: for static applications, designated "SC" on order.
Braid-Over-Braid: for severe run-out.
Multi-Lok: for abrasive applications

Rains-Flo Sealing Systems, Inc. 820 S. Lipan St., Denver, Colorado 80223 (800) 231-4209 Fax (303) 935-9383